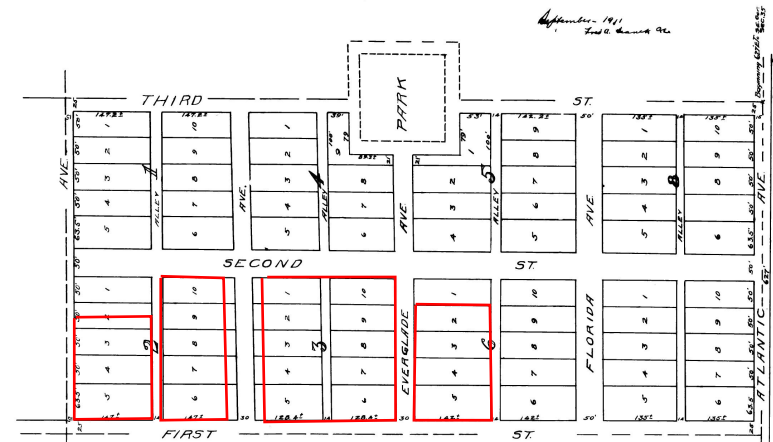


PLAT
OF
CAMPBELL AND SAXON ADDITION
POMPANO, FLA.

Described as follows: Beginning at a point 627' W. of SE. cor. Sec. 35-48-42,
N. 135° W. 627' S. 132', E. 627' 75' 66g.
Block Numbers will not conform with general enumeration of town plat.
Scale 100' = 1" = 1/4"

September 1911
Fred B. Saxon & Co.



STATE OF FLORIDA
COUNTY OF PALM BEACH } ss
This instrument was filed for record this 6th
day of September, 1911, and duly
recorded in the 6th day of September
1911, in Book 125 of Public Records
at page 125, RECORD VERIFIED
By Robert B. Saxon
County Clerk

125
Copied by
BOWELL & HOLSTLAW
Under Statutes of
FLORIDA
County Engineer
Passed by CHM Checked by JRM